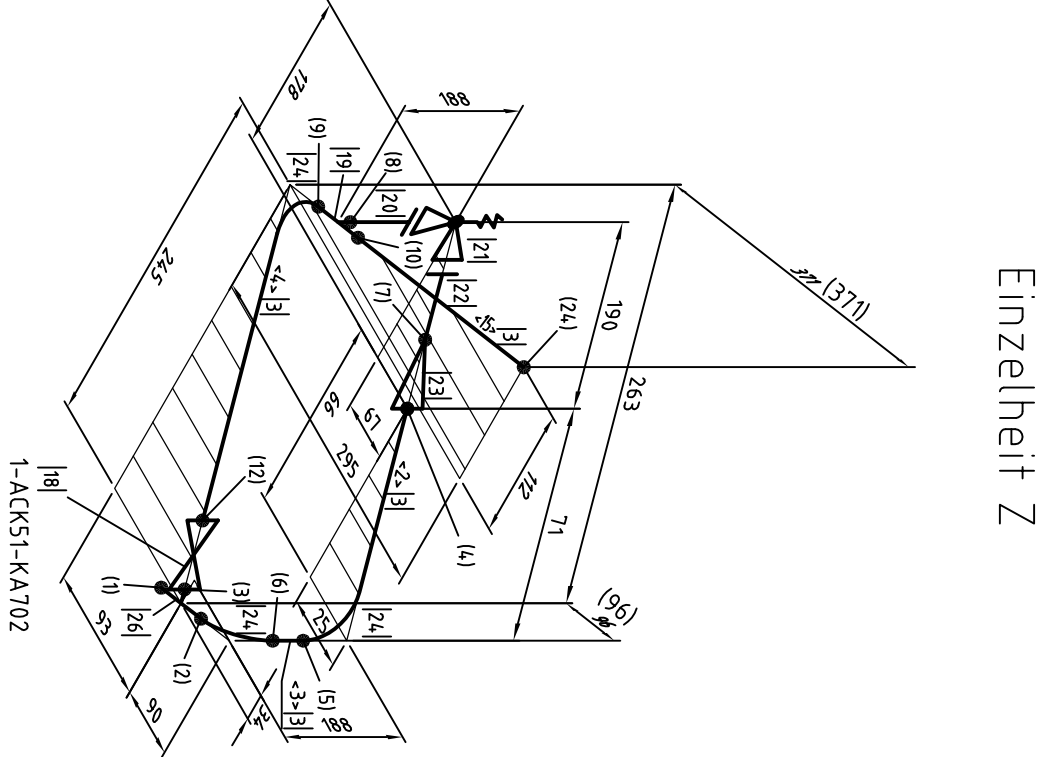
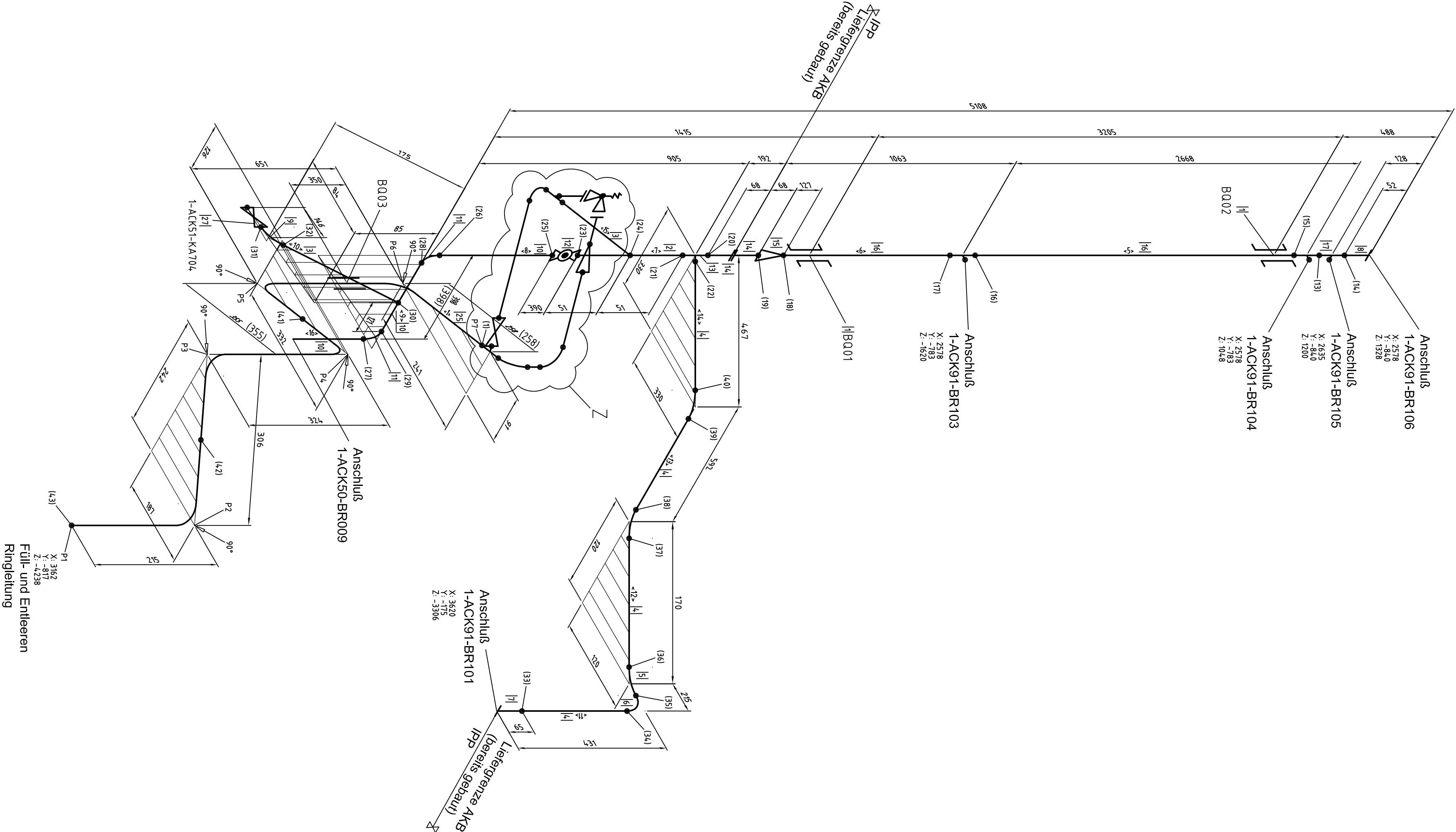


Pos	Bezeichnung	KCS-Nr./Change	DN 1	DN 2	Norm	Menge	Da 1	s 1	Da 2	s 2	Radius	Material
[1]	Führungsträger		65			2						14.435
[2]	Rohe	387200	125		DN EN 10217-7	101	139,7	4,0				14.435
[3]	Rohe	870425	32		DN EN 10217-7	427 mm	42,4	16				14.435
[4]	Rohe	493395	100		DN EN 10217-7	1004 mm	114,3	2,3				14.435
[5]	Bogen BA3 45°	493395	100		3hinh DN 4065 3	114,3	2,3					14.435
[6]	Bogen BA3 90°	493395	100		3hinh DN 4065 1	114,3	2,3					14.435
[7]	Flansch	89494	100		DN 434	1						14.404
[8]	Flansch	89494	45		DN 434	1						14.404
[9]	Bogen	HT1467	32		DN 4065-1	1	42,4	2,0				14.404
[10]	Rohe	473480	125		DN EN 10217-7	94,9 mm	139,7	2,6				14.435
[11]	Bogen BA3 45°	473480	125		3hinh DN 4065 2		139,7	2,6			190	14.404
[12]	Krit. m. p. Antrieb	1-ACKS1-KA401	125			1						14.435
[13]	1-Stück	421855	100	125	DN 2615-1	1	114,3	6,0	139,7	6,0		14.404
[14]	Flansch		125		DN 434	2						14.404
[15]	Reduzierung		65	105		1	16,1	2	139,7	2,6		14.435
[16]	Rohe		65		DN EN 10217-7	3308 mm	16,1	2				14.435
[17]	1-Stück		25	65	DN 2615-1	3	33,7	2	16,1	2,0		14.435
[18]	Krit. DMS SE	siehe Zeichnung	32			2						14.435
[19]	1-Stück	F40456	20	32	DN 2615-1	1	26,9	16	42,2	2,0		14.404
[20]	Flansch	TH468	20		DN 2635	1						14.404
[21]	Sicherheitsventil	1-ACKS1-KA301	20	25		1						14.404
[22]	Flansch	89054	25		DN 2635	1						14.404
[23]	Reduzierung	F403077	25	32	DN 2616	1	33,7	2,0	42,2	2,0		14.435
[24]	Bogen 90°	310723	32		DN 2605-1	3	42,4	2				14.404
[25]	Rohe	878803	32		DN EN 10217-7	276 mm	42,4	16				14.435
[26]	1-Stück	908046	32		DN 2615-1	1	42,4	2				14.435

Pos	länge [mm]	DN
+1-	2708	32
+2-	23	32
+3-	92	32
+4-	41	32
+5-	2516	65
+6-	792	65
+7-	101	125
+8-	212	125
+9-	241	125
+10-	100	32
+11-	214	100
+12-	44	100
+13-	466	100
+14-	280	100
+15-	172	32
+16-	497	125



Pos	Schweißverbindung	Profilteil-Nr.
[17]	AK8712	
[20]	AK8708	
[21]	AK8708	
[41]	AK8708	
[51]	AK8708	
[61]	AK8708	
[71]	AK8708	
[81]	AK8708	
[91]	AK8708	
[101]	AK8712	
[121]	AK8708	
[131]		
[141]		
[151]		
[161]		
[171]		
[181]		
[191]		
[201]	AK8723	
[211]	AK8723	
[221]	AK8723	
[231]	AK8723	
[241]	AK8723	
[251]	AK8723	
[261]	AK8723	
[271]	AK8723	
[281]	AK8723	
[291]	AK8723	
[301]	AK8723	
[311]	AK8723	
[321]	AK8723	
[331]	AK8723	
[341]	AK8723	
[351]	AK8723	
[361]	AK8723	
[371]	AK8723	
[381]	AK8723	
[391]	AK8723	
[401]	AK8723	
[411]	AK8712	
[421]	AK8712	
[431]	AK8712	



Pos	Bezeichnung	KCS-Nr./Change	DN 1	DN 2	Norm	Menge	Da 1	s 1	Da 2	s 2	Radius	Material
P1			0	0		0						0
P2			0	0		0						0
P3			0	0		0						0
P4			0	0		0						0
P5			0	0		0						0
P6			0	0		0						0
P7			0	0		0						0

Pos	Bezeichnung	KCS-Nr./Change	DN 1	DN 2	Norm	Menge	Da 1	s 1	Da 2	s 2	Radius	Material
B001			60-H1026									
B002			60-H1026									
B003			60-H1026									

Pos	Bezeichnung	KCS-Nr./Change	DN 1	DN 2	Norm	Menge	Da 1	s 1	Da 2	s 2	Radius	Material
B001			60-H1026									
B002			60-H1026									
B003			60-H1026									

AS BUILT

Isolierung DN 32 – 30 mm  
Isolierung DN 65 – 80 mm  
Isolierung DN 100 – Microtherm 25 mm  
Isolierung DN 125 – Microtherm 25 mm

Pos	Bezeichnung	KCS-Nr./Change	DN 1	DN 2	Norm	Menge	Da 1	s 1	Da 2	s 2	Radius	Material
B001			60-H1026									
B002			60-H1026									
B003			60-H1026									

